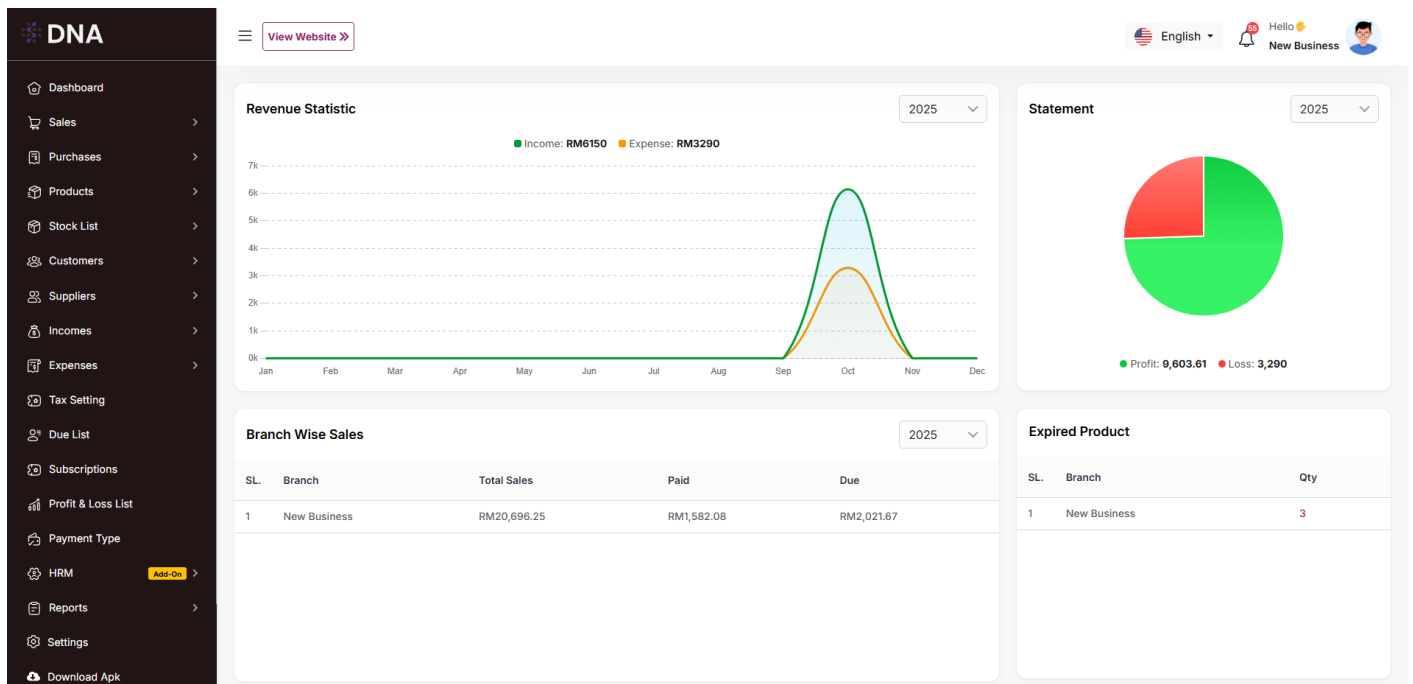


Overview

Here, you can view an overview of all branches. The revenue statistics are displayed, and you can select a year to dynamically update the chart for the chosen period. A pie chart shows profit and loss, with a yearly dropdown available for selection. Similarly, you can view branch-wise sales and purchase lists. The system also displays the quantity of expired products in each branch, as well as an employee overview showing the number of employees per branch.



Branch List

Here, you can view a list of all branches, including the first branch. At the top of the table, instructions are provided on how to create a branch. When creating a new branch, the system will automatically generate it (if it does not already exist), and relevant data will be moved to the new branch. For example, when a branch is created, the new branch will be generated automatically using the business name. Note that the first branch cannot be deleted.

In the listing, you can filter branches using the search input field or adjust the number of entries displayed per page. From here, you can also add a new branch, edit or delete branches, or perform a multi-delete. Additionally, by click on business name, also have the "Login" button allows you to log in directly to the selected branch.

- Previously, you didn't have a branch section. So, when you create your first branch, another branch will be automatically created using your company/business name.
Example: If your company/business name is Acnoo, When you create your first branch, another branch will automatically be created with the name Acnoo.
- All your previous data will be assigned to the automatically created branch (Acnoo In This Example).
- You cannot delete the automatically created branch. This is because if a branch is deleted, it is removed from every section, making it impossible to filter branch data. Therefore, the automatically created branch cannot be deleted.

Branch List [+ Add New Branch](#)

Show- 10

<input type="checkbox"/>	SL.	Name	Phone	Email	Address	Status	Action
<input type="checkbox"/>	1	New Business	081277530033	newbusiness@email.com	Address	<input checked="" type="checkbox"/>	⋮
<input type="checkbox"/>	2	Branch Johor	0137831205	rawmat.johor@business.com	Lot 3, Kempas Industrial Zone	<input checked="" type="checkbox"/>	⋮

Revision #3
 Created 30 September 2025 03:20:03 by Admin
 Updated 11 October 2025 02:06:03 by Admin